

Catch eye for iPhone

The Catch Eye allows for you to monitor DVRs.

It now supports Live mode. Playback mode will be added soon.

It is easy and convenient to use. You can watch up to 16 channels on iPhone.

The functions of Catch Eye:

1. Live View
2. 1/4 division
3. Channel switching
4. Server management
5. PTZ control
6. Digital zooming
7. Snapshot

The functions operated by Touch:

1. Single touch : switch channel, Pan/Tilt.
2. Multi touch : Digital-Zoom, PTZ Zoom-In/Out

Catch eye description index

1. Starting
2. Server management
3. Live viewing
4. Multi channel viewing
5. Image Saving
6. PTZ control mode
7. Digital-Zoom mode
8. Server information

1. Starting

When you launch the Catch Eye for the first time, You needs to register new DVR servers in the screenshot as below. Tap the "Add server" button to continue.



2. Server management



Carrier 4:15 PM

Cancel Add Server Save

Title: demo

IP Address: 192.168.1.110

Port: 8000

Username: admin

Q W E R T Y U I O P

A S D F G H J K L

↑ Z X C V B N M ↵

.?123 space Done

Enter the appropriate data of your DVR server.

- Title : Name that you want to associate with the DVR server.
- IP address : IP address(example : 192.168.1.110) or a DNS name(example : 12345.3r.global.com).
- Port : Port number(watch port in DVR setup).
- Username : Username(default is "admin").
- Password : User password.

When you finish, tap the "Save" button.

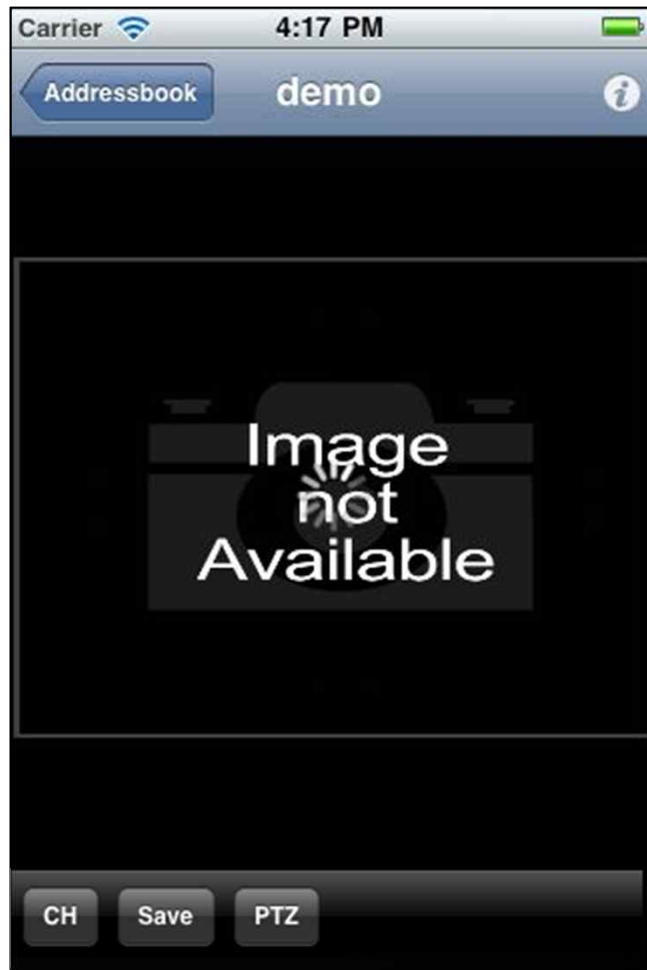
2. Server management

The "Edit" button modify the information of the selected DVR Server.



3. Live viewing

Go ahead and tap the DVR server item in Addressbook table when you register DVR server. The app. will show "loading circle icon" as below.

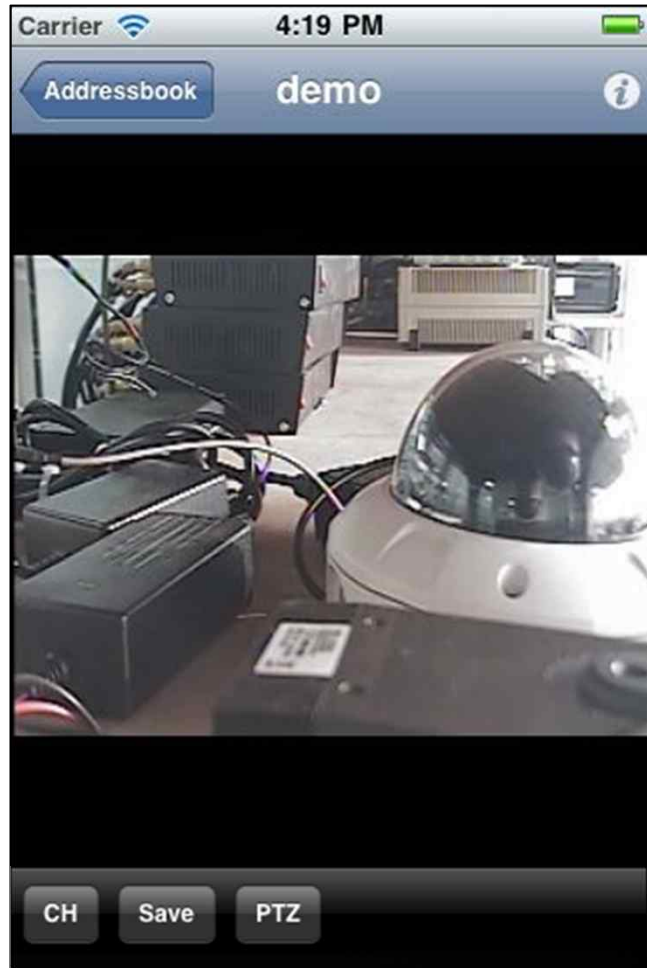


** Until it received DVR channel data, it takes a few seconds(it depends on network environment. 3G will be longer than Wi-Fi)

3. Live viewing

The next screen shows DVR live view for first channel.

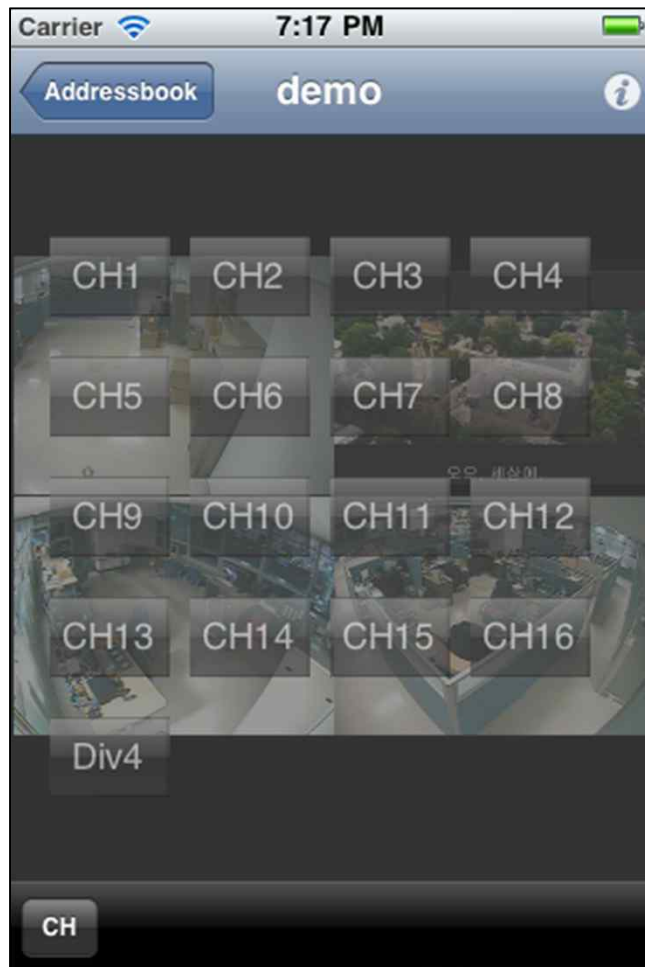
"CH", "Shot" and "Digital-Zoom" or "PTZ" buttons are shown in the bottom bar.



4. Multi channel viewing

- "CH" button -

If you tap this button, sliding view will appear in live view and you can change channel and division mode. Max channel is 16, and division type is 1 channel mode, 4 channel mode, and 16 channel mode. If you finish change channel or division, tap "CH" button in bottom bar again.



5. Image Saving


- "Save" button -

"Save" button capture 1 channel image. If you capture image by tapping "Save" button, you can find image file in iPhone's photo album menu.

6. PTZ control mode

- "PTZ" button -
"PTZ" button makes you can control PTZ camera

If camera type of the channel is PTZ, the third button in the bottom bar will be named "PTZ". Otherwise, "Zoom".

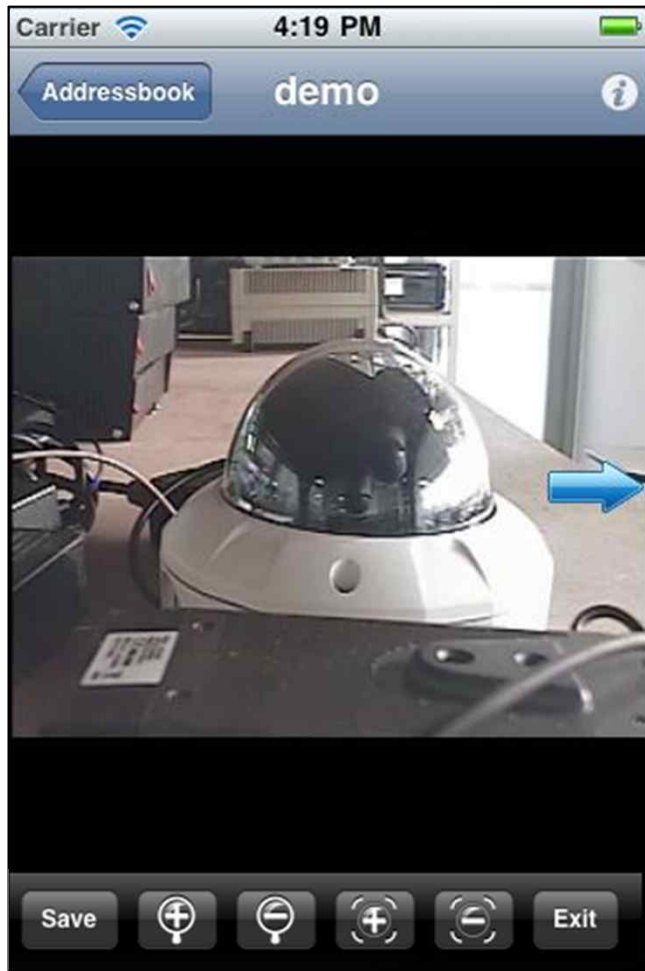
Every PTZ functions are controlled by your touch. You can also control zoom-in, zoom-out, focus-in, focus-out functions by tapping  buttons.

If you tap the "Exit" button in "PTZ" mode or "Zoom" mode, channel mode will be changed to Channel-switching mode. And you can change channel by touch and scroll left or right direction.

6. PTZ control mode

- Pan/Tilt -

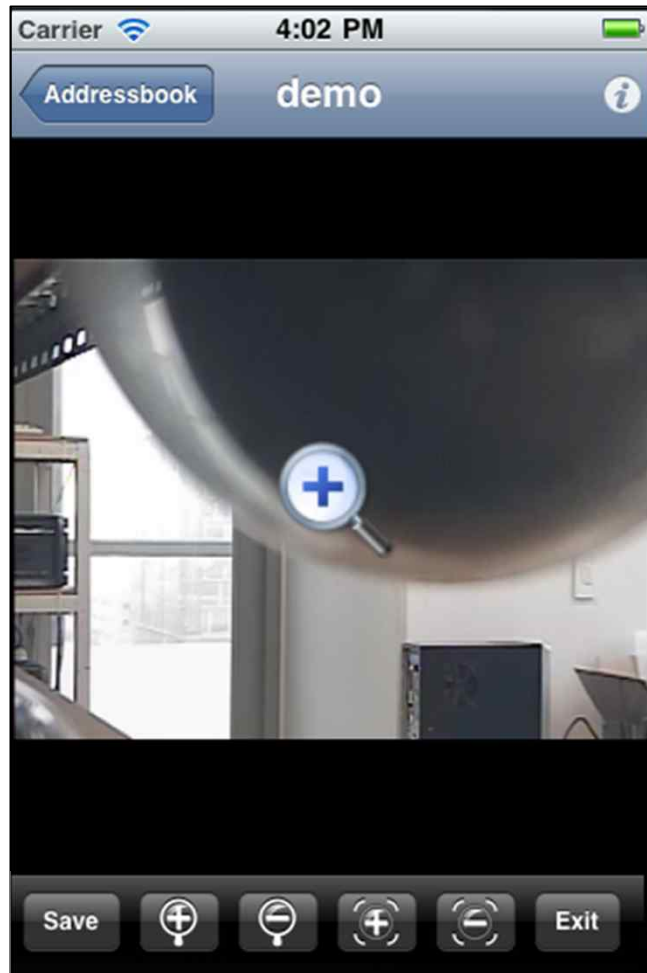
Pan/Tilt functions are controlled by single touch directionally. The app. will show the arrow in the screen as below.



6. PTZ control mode

- Zoom-In/Out -

Zoom-in/out function is controlled by multi touch from inside to outside or from outside to inside. The app. will show "+" icon in Zoom-in or "-" icon in Zoom-Out in the screen as below.



7. Digital-Zoom mode

If camera type is not pan-tilt, you can control digital zoom function. supported functions are like below.

- Digital Zoom-in
- Digital Zoom-out

Every Digital Zoom function is controlled by your touch. Digital Zoom-in function is controlled by multi touch from inside to outside.

Digital Zoom-out function is controlled by multi touch from outside to inside.

You can also control Digital zoom-in and Digital zoom-out functions by tapping



8. DVR information

If you tap the "i" button in top bar, you can see the DVR server's information.

DVR server Information list :

- Server name
- Server IP address
- Channel name
- Server network timestamp
- Image size

